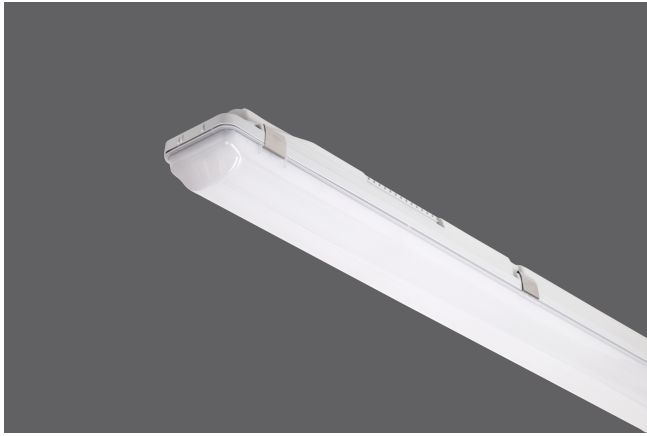


PROOF



OPTICAL

Direct symmetric distribution
 Beam angle 120°
 UGR <22
 Luminous efficacy >100 lm/W
 Lifetime (L90/B10): 50000 h.(tq+25°C)
 Lifetime (L80/B20): 100000 h. (tq+25°C)
 SMD LED module
 Color rendering index: CRI>80
 MacAdams SDCM 3

MECHANICAL

Polycarbonate housing
 Opal polycarbonate diffuser
 Stainless steel clips
 White steel reflector
 IP66 protection degree Impact resistance IK08
 Glow-wire test resistance 650°C
 Through-wiring
 2 cable glands

ELECTRICAL

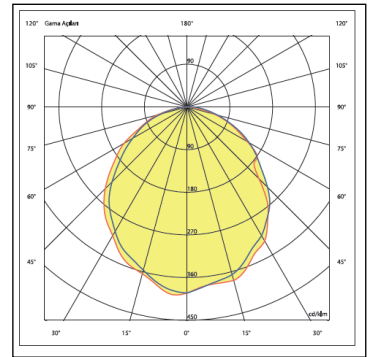
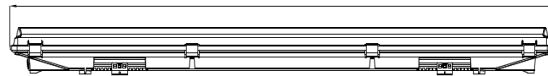
Halogen-free wiring
 220-240V-50/60Hz
 Power factor >0.95
 Constant current, Class II, isolated driver
 CE - IEC 60598-1 - EN 60598-1
 Ambient temperature from -20°C to +50°C
 On-Off Control - (Code: .N000)

OPTIONAL

DALI - (Code: .DXXX)
 1-10V - (Code: .MXXX)
 Tunable White
 Flicker-free - (Code: .FXXX)
 Emergency battery - (Code .X3HT)
 CBS connection
 Sensor applications
 Color rendering index: CRI >90
 Color temperature (K) options
 Through-wiring
 Suspension kit

INSTALLATION

Surface or suspended mounted.



Product Code	Power (W)	Lumen (lm)	CCT (K)	CRI	Dimensions WxLxH (mm)	Cut-Out Q (mm)	Weight (kg)
07101.15.40.049	28	3900	4000K	Ra>80	85x1485x88	N/A	1,6

All electrical values given are rated values. Luminous flux and connected electrical load are subject to an initial tolerance of +/- 10%. Tolerance of colour temperature: +/-150 K. Unless stated otherwise, the values apply to an ambient temperature of 25°C.

Any information including technical parameters and product codes may differ from standard products in catalogue & web site due to customization made per projects.

Ikizler Lighting has the right to make changes or cancellations on the products without notification. Updated information on the products can be received from our web site.